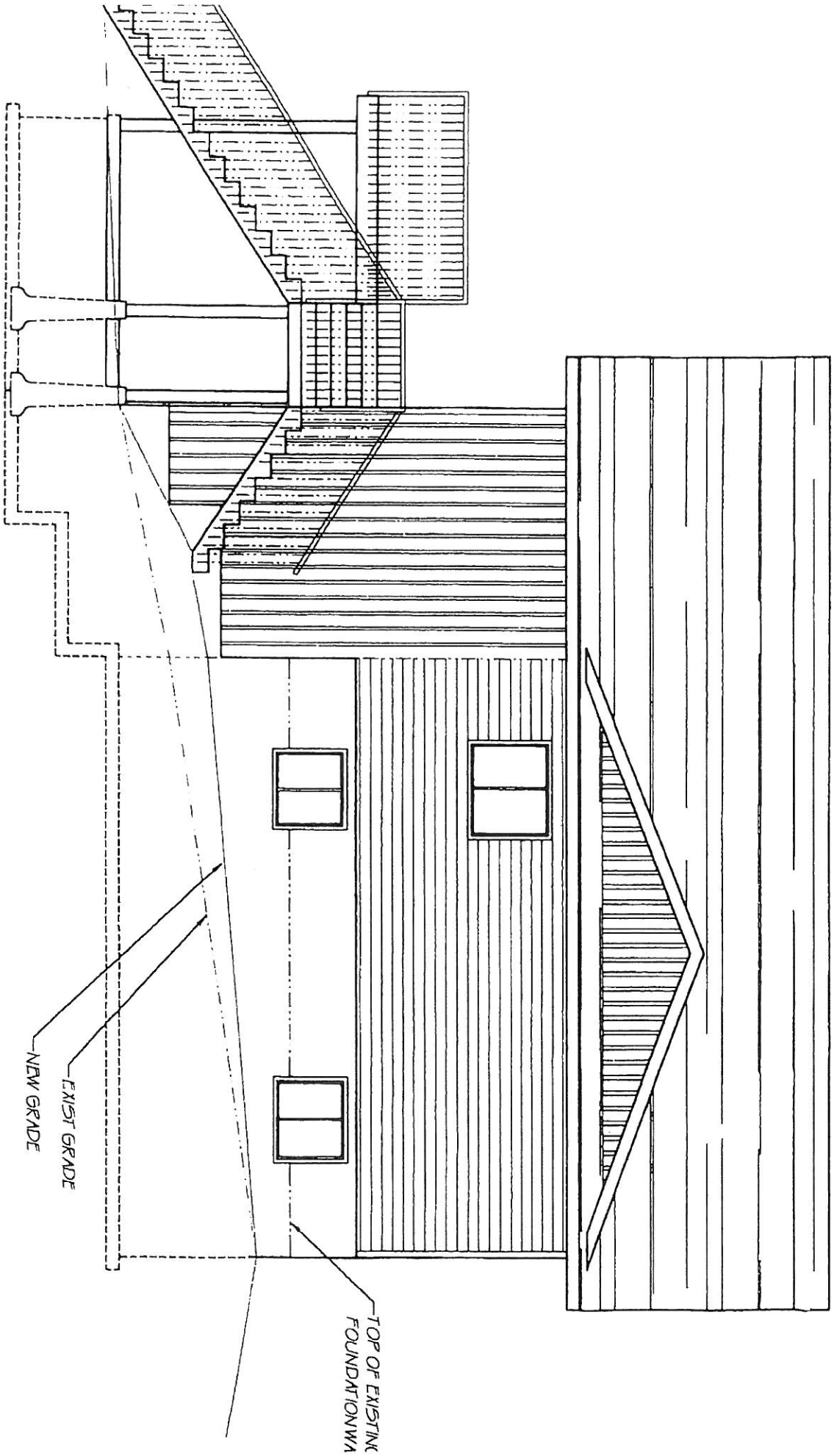


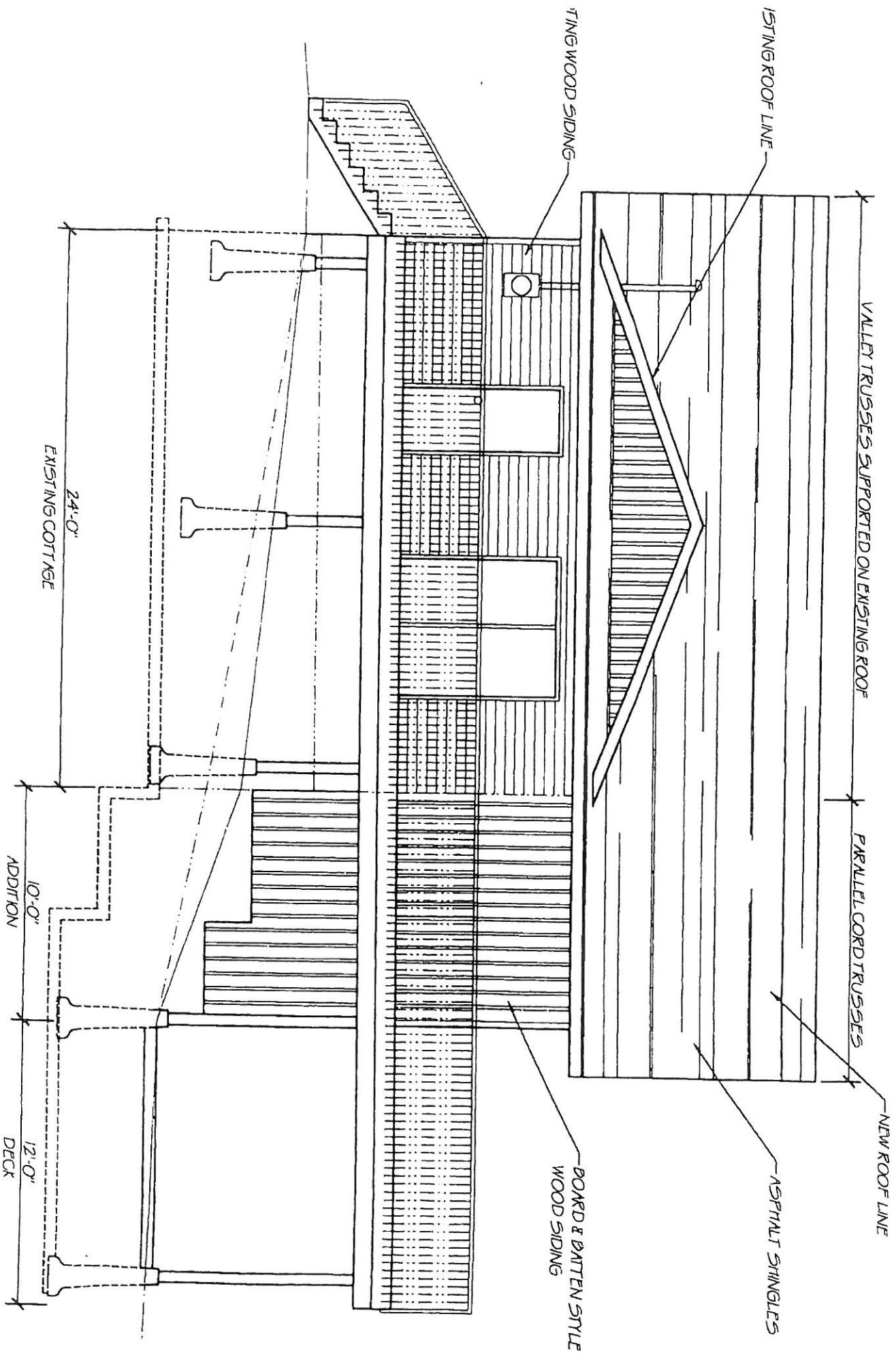
FRONT ELEVATION

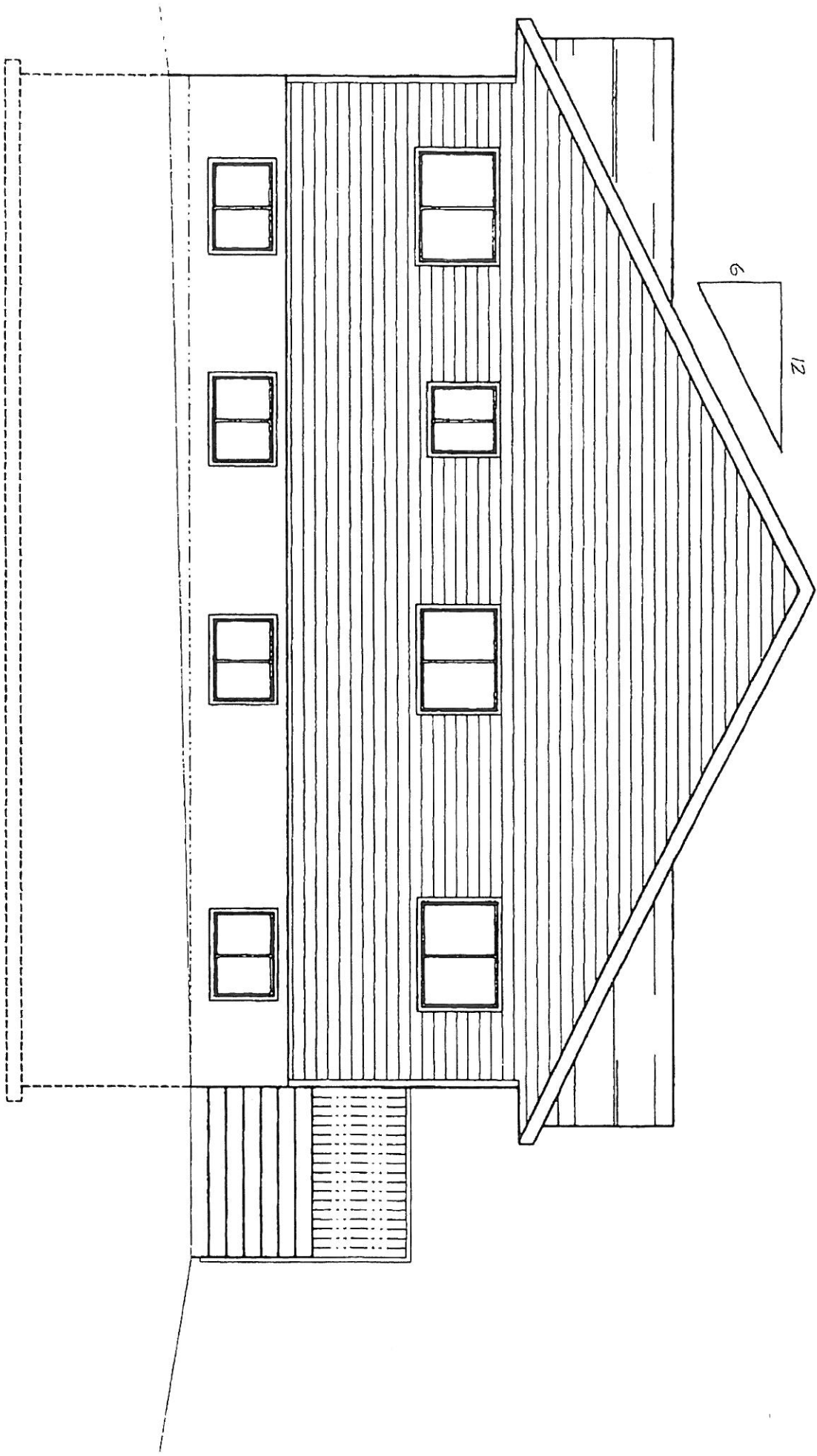


RIGHT SIDE ELEVATION

EXISTING GRADE
NEW GRADE

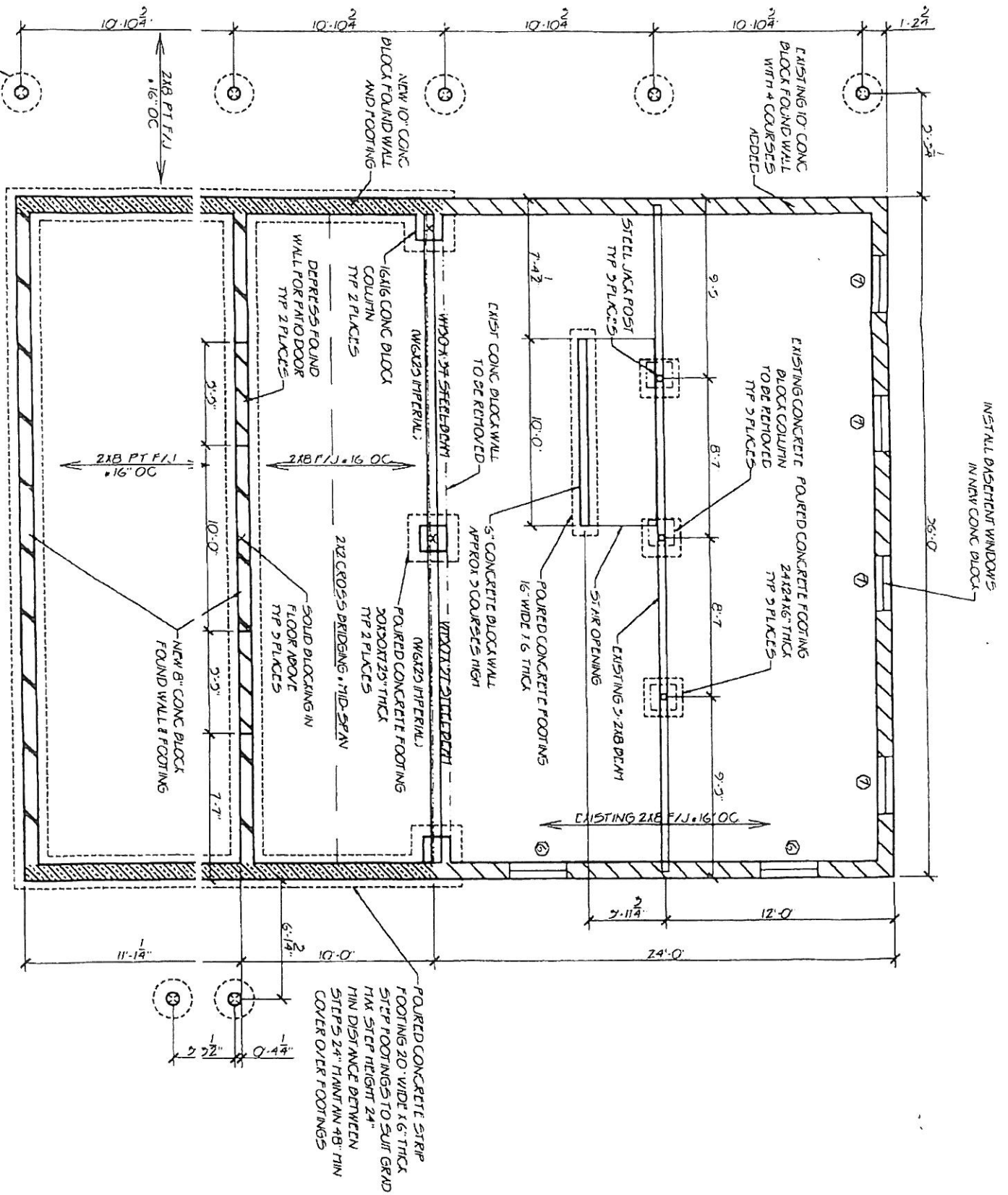
TOP OF EXISTING
FOUNDATION





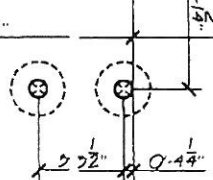
REAR ELEVATION

POURED CONCRETE FRM
USE 24" HIGH FOOT FORM



INSTALL BASEMENT WINDOWS
IN NEW CONC BLOCK

POURED CONCRETE STRIP
FOOTING 20" WIDE X 6" THICK
STEP FOOTINGS TO SURF GRAD
MIN STEP HEIGHT 24"
MIN DISTANCE BETWEEN
STEPS 24" MIN IN 48" MIN
COVER OVER FOOTINGS



11'-14"

6'-2"

10'-0"

1'-22"

0'-44"

24'-0"

2'-11 1/4"

9'-3"

8'-7"

8'-7"

10'-0"

7'-4 1/2"

9'-5"

10'-10 1/4"

10'-10 1/4"

10'-10 1/4"

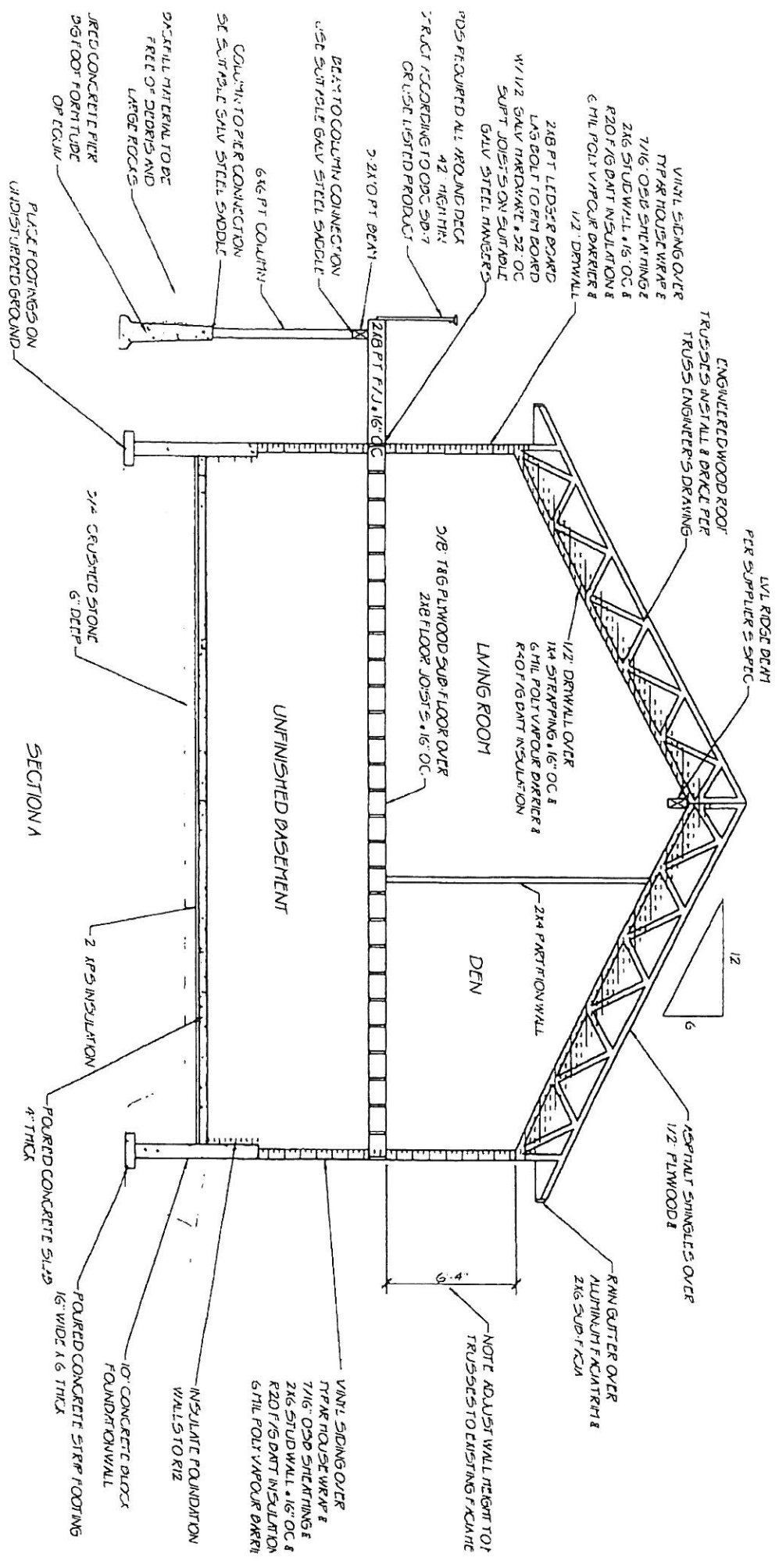
10'-10 1/4"

10'-10 1/4"

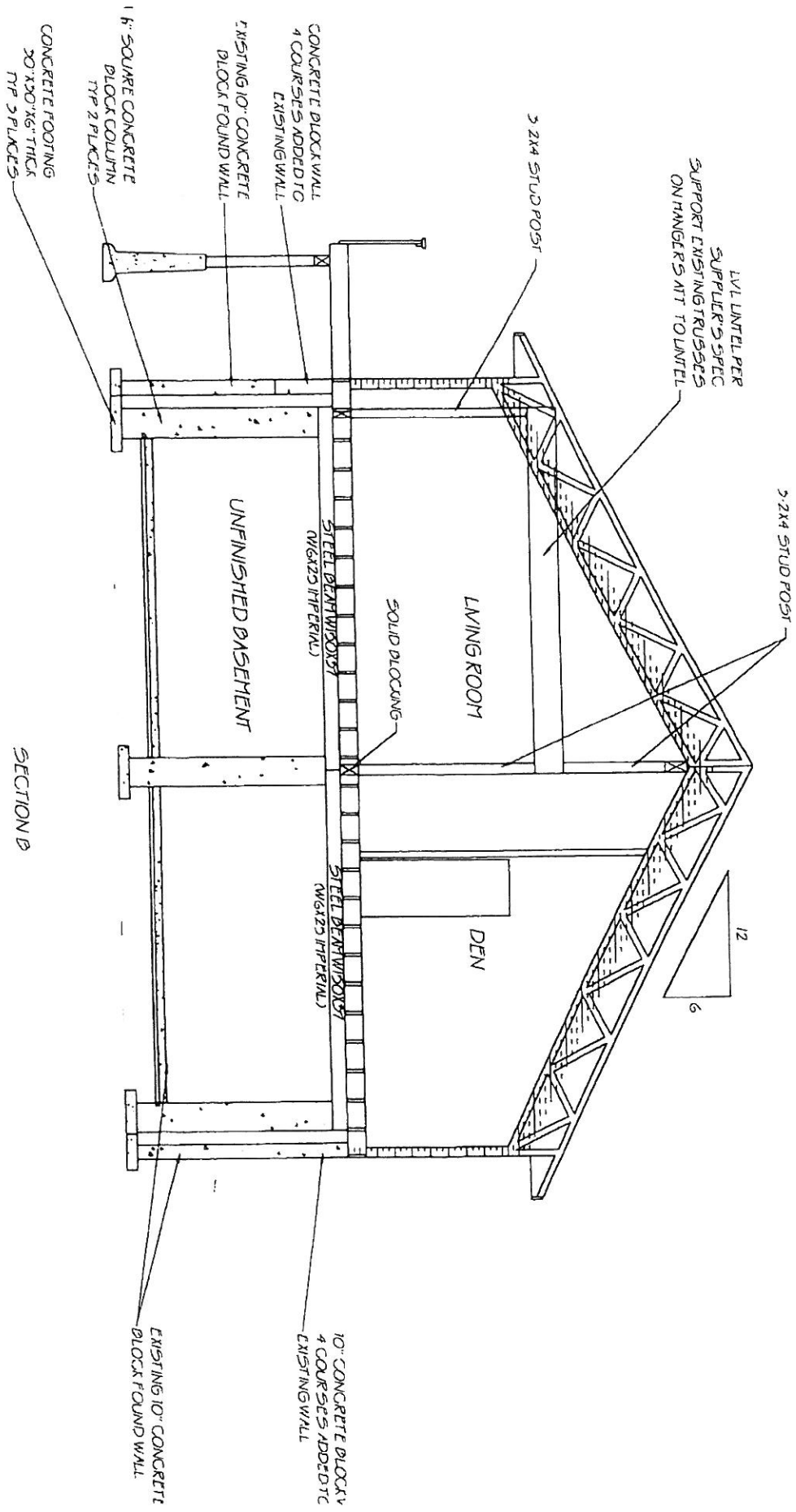
10'-10 1/4"

10'-10 1/4"

10'-10 1/4"



SECTION A



SECTION B

LVL UNTEL PER
SUPPLER'S SPEC
SUPPORT EXISTING TRUSSES
ON HANGERS ATT TO UNTEL

3 2x4 STUD POST

3 2x4 STUD POST

LIVING ROOM

DEN

SOLID BLOCKING

STEEL BEAM WINDOW
(N6x123 IFFERAL)

STEEL BEAM WINDOW
(N6x123 IFFERAL)

CONCRETE BLOCK WALL
4 COURSES ADDED TO
EXISTING WALL

EXISTING 10" CONCRETE
BLOCK FOUND WALL

1 1/2" SQUARE CONCRETE
BLOCK COLUMN
TYP 2 PLACES

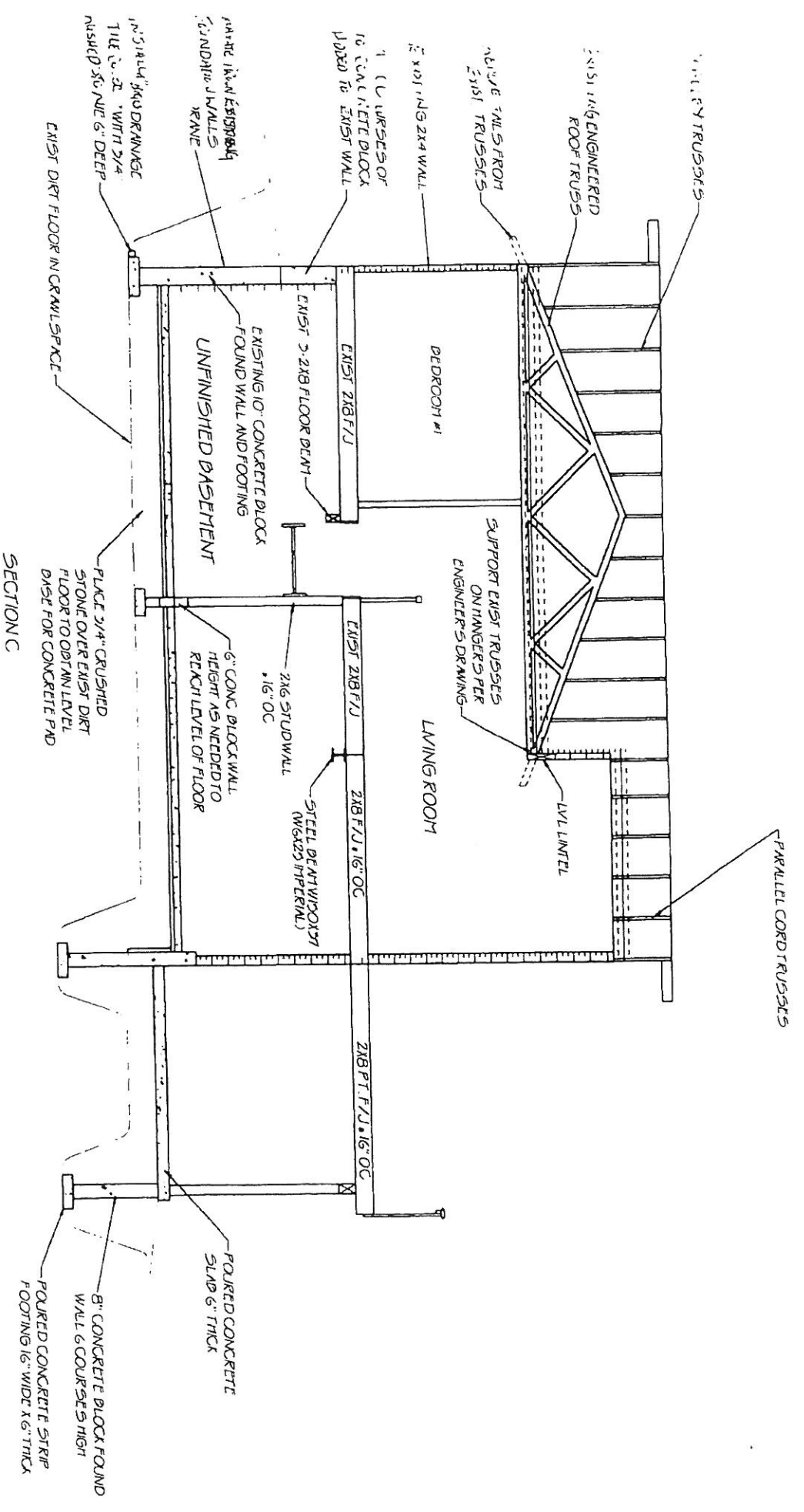
CONCRETE FOOTING
20" x 30" x 6" THICK
TYP 2 PLACES

UNFINISHED BASEMENT



EXISTING 10" CONCRETE
BLOCK FOUND WALL

10" CONCRETE BLOCK
4 COURSES ADDED TO
EXISTING WALL



SECTION C

POURED CONCRETE STRIP
FOOTING 16" WIDE X 6" THICK

8" CONCRETE BLOCK FOUND
WALL 6 COURSES HIGH

POURED CONCRETE
SLAB 6" THICK

EXIST 2x8 F/W

EXIST 2x8 F/J

EXIST 2x8 F/W

EXIST 2x8 F/J

EXIST 2x8 F/W

EXIST 2x8 F/J

EXIST 2x8 F/W

EXIST 2x8 F/J

EXIST 2x8 F/W

EXIST 2x8 F/J

EXIST 2x8 F/W

EXIST 2x8 F/J

EXIST 2x8 F/W

EXIST 2x8 F/J

EXIST 2x8 F/W

EXIST 2x8 F/J

EXIST 2x8 F/W

EXIST 2x8 F/J

EXIST 2x8 F/W

EXIST 2x8 F/J